

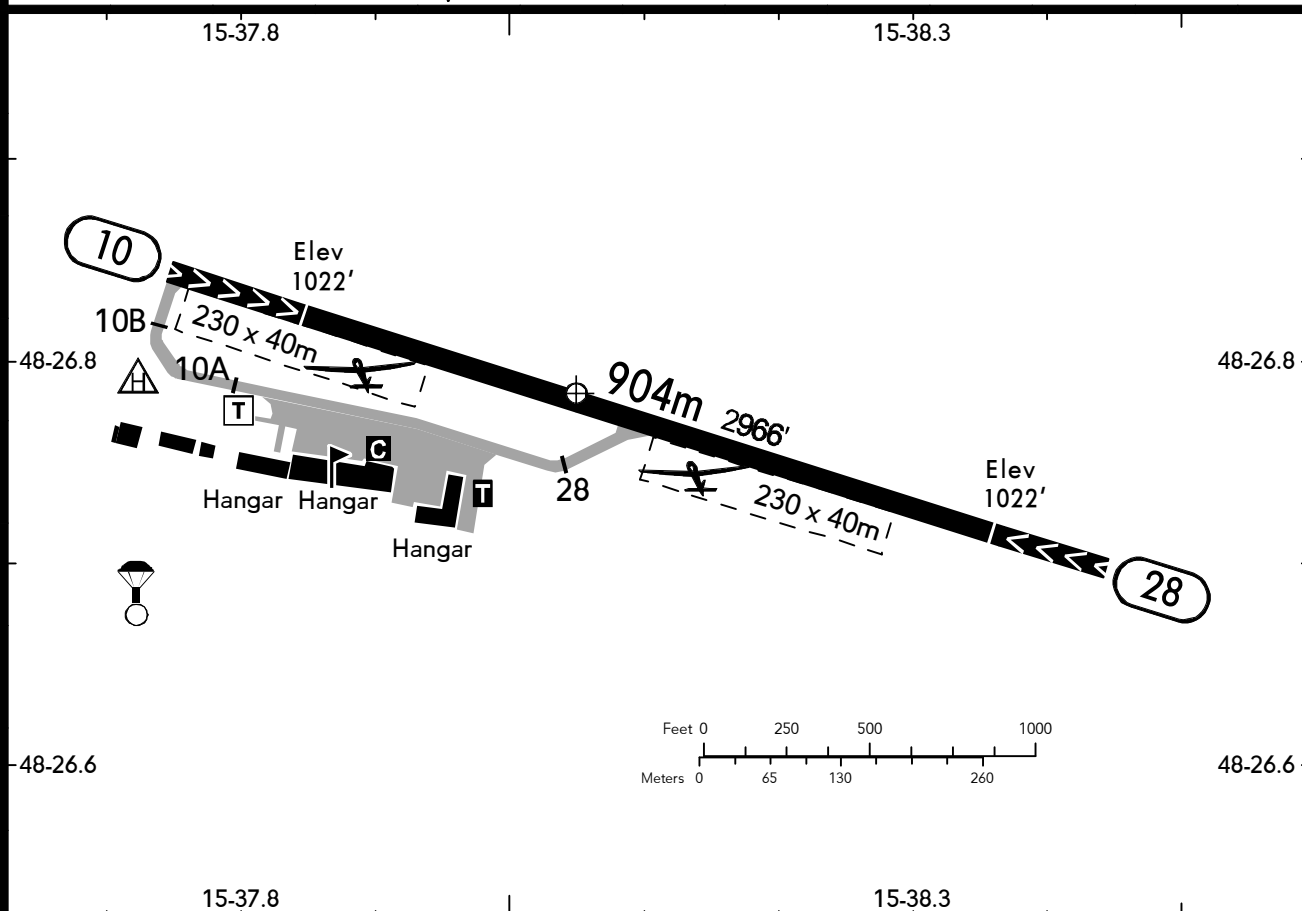
LOAG
LANGENLOIS

12 NOV 21 **(19-2)**

KREMS
AUSTRIA

BRIEFING STRIP™	LOCATION	AFIS
	Elev 1035' /315m N48 26.8 E015 38.1	KREMS AERODROME/FLUGPLATZ 125.110

ADMITTED AIRCRAFT



RWY No	Dimension (m) - Surface	TORA (m)	LDA (m)	Strength	Lights
10 (110°) 28 (290°)	904 x 18 Asphalt	904	784 804	5t AUW	---

NOTE: Refer to Wien (LOWW) Area Information.

Contact KREMS AERODROME/FLUGPLATZ at least 3 NM prior to reaching the AD or overhead the compulsory REP.

Pay attention to HEL ARR/DEP sector. Look out for parachuting and glider activity.

ARR/DEP only via REPs. Adhere strictly to the procedures as depicted.

Taxiing on RWY and TWY only.

Within traffic circuit avoid overflying of Bundesstraße (SW of AD) to the south and built-up areas near AD.